

The ParkBoard Decision Support System uses state of the art technology so you can analyze occupancy trends, revenue rates, projected occupancy rates, and projected revenue.

Breakdown

Each Section listed above can be broken down into 3 sections: Organization | Metro | Lot. This is a perfect way to drill down into your data to see each section as close as possible.

Parking Revenue

Using the Parking Revenue section you can view multiple types of purchases for a desired time frame and click into each day to see the breakdown by hour.

Max Occupancy Rates

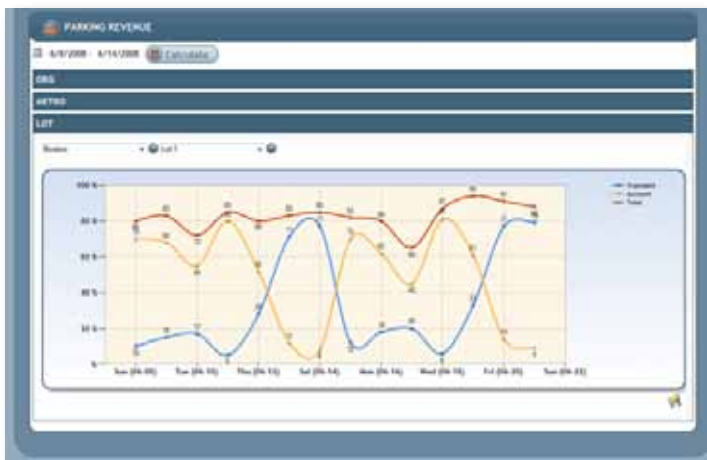
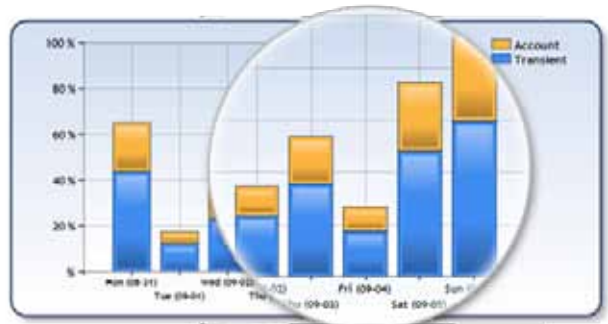
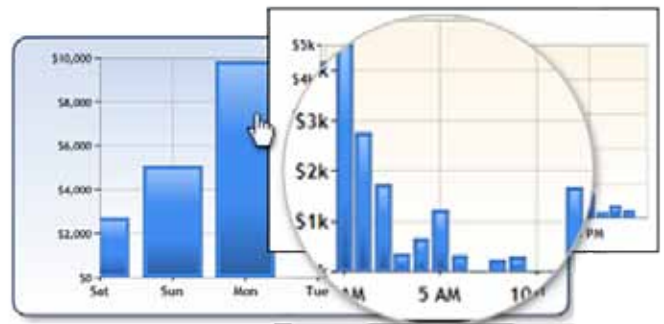
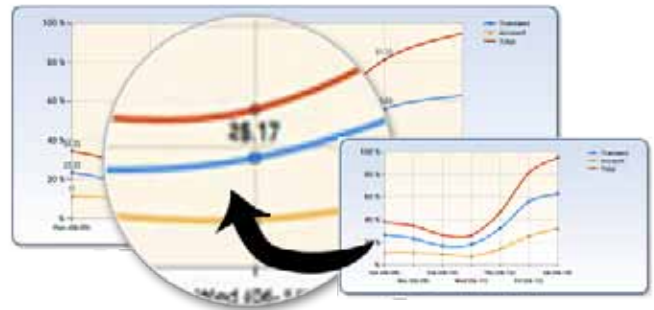
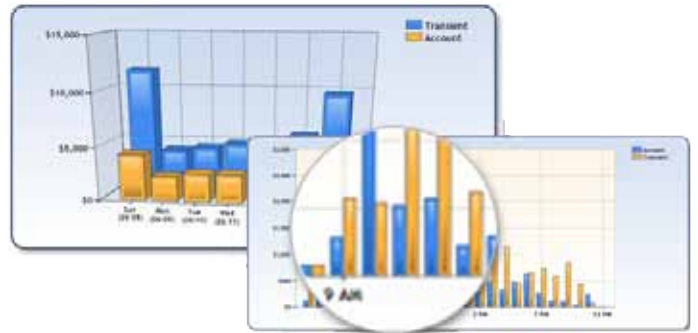
Tracking the max capacity of each day can help balance the employees at each lot and maximized potential increases in revenue.

Projected Revenue

In the projected revenue section the ParkBoard System tells you how much you would have made per day based on a % price increase.

Projected Occupancy

Using a stacked column graph in the Projected Occupancy section we can see what the projected numbers would have been if the number of occupants increased by a specific percentage.



Personal Information Screenshot